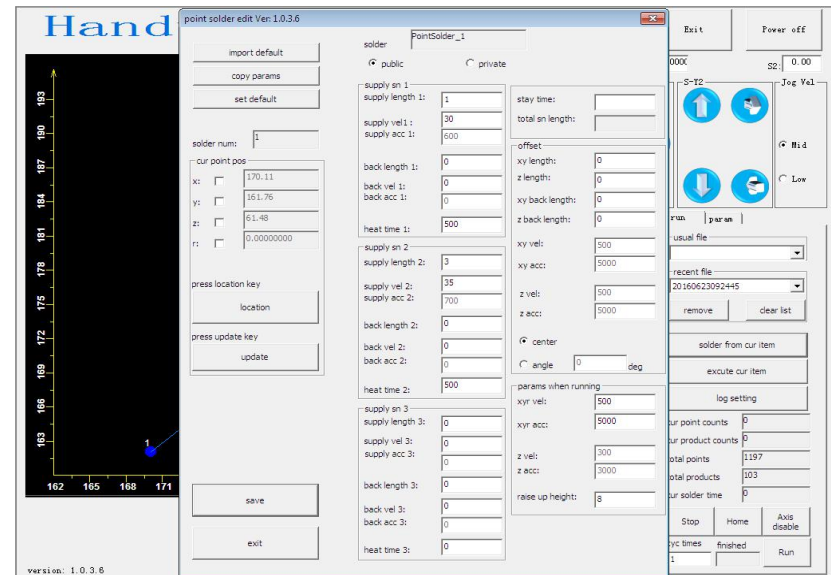


Programming

Self-developed advanced software, fool-style programming with wireless controller like play game , all parameters can be set in one program, such as moving path, solder wire feeding quantity, solder wire feeding speed, running speed, soldering time etc , very easy to use. The self-developed software & hardware researched enjoy free upgrade in the whole service life.

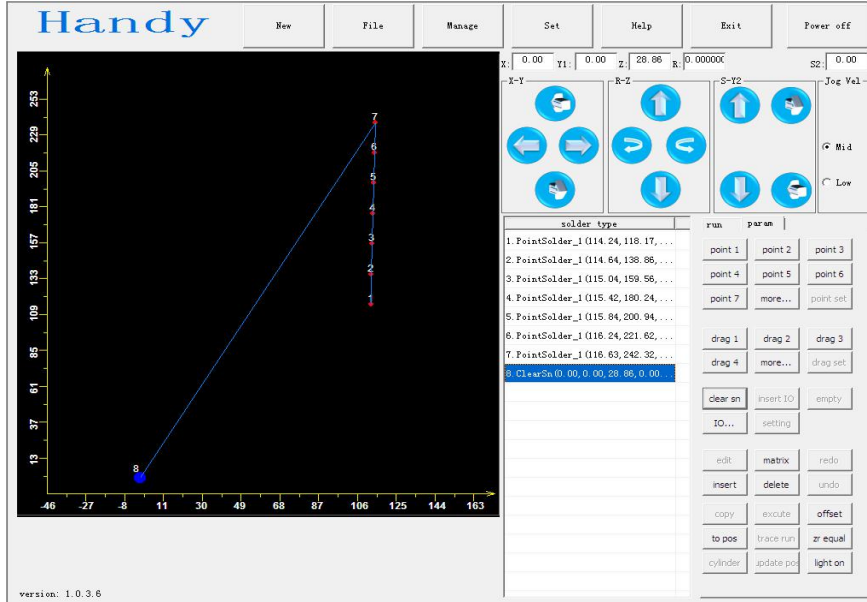
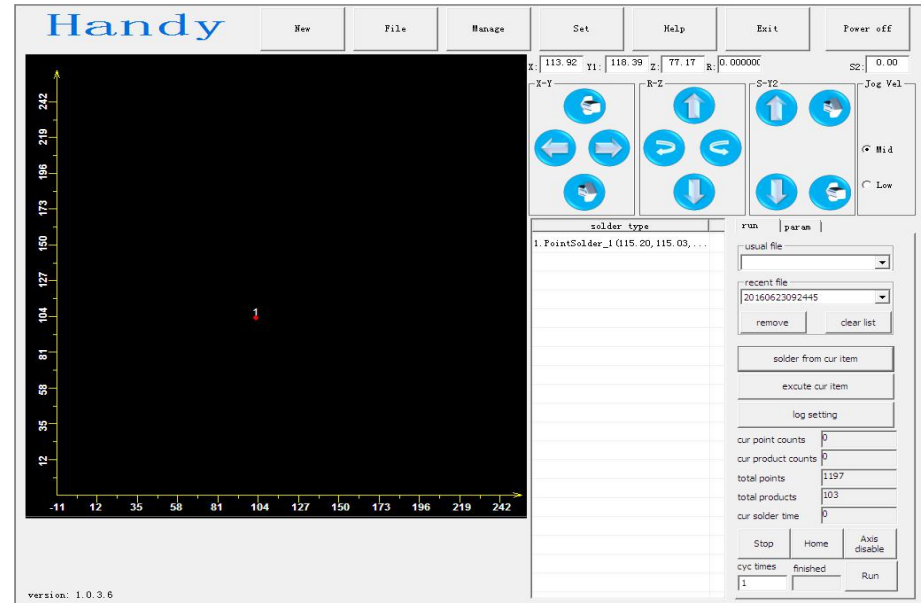
Programming

Bulk modification of similar soldering spots can be set without modifying one by one. Insert or delete soldering spot coordinates in any position without affecting other soldering spots.



Programming

Easier setting operation for spot soldering and drag soldering; built-in data can be called out at any moment; The program can store an unlimited number ;Real-time display the current completion of the number of soldering products and the current number of soldering points.



Programming

Every program can set different types of spot soldering and drag soldering according to the different size of the soldering pad .Both spot soldering and drag soldering parameters can be set to 100 groups.The display screen of coordinatometer shows the track of all soldering spots clearly and makes program modification more visually.Real-time display of the current soldering track